

# CANINE HEARTWORM PREVENTION AND DISEASE

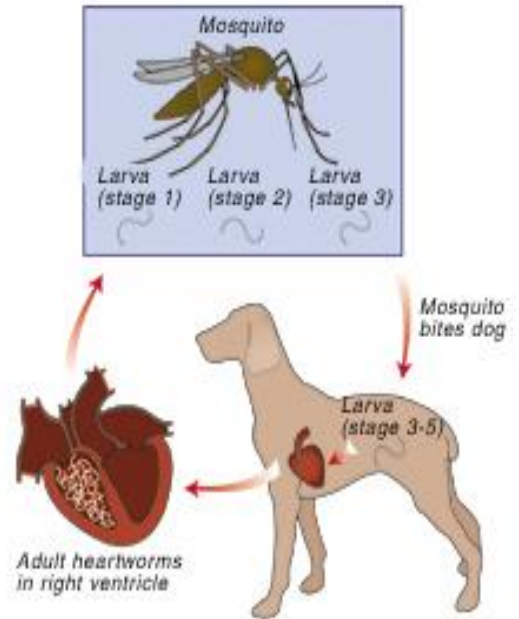
## Overview

Heartworms are serious parasite transmitted to your dog after being bitten by a mosquito. These worms grow in the right chamber of the heart and can reach length of up to 8 inches. Obviously 8-inch worms in your dogs' heart are a serious health problem.

## Symptoms

Heartworms are insidious at first, causing no outward signs. However, they are damaging the heart, lungs, and blood vessels. Once the damage becomes severe symptoms become more obvious.

Symptoms include a harsh cough, weight loss, fluid on the abdomen, anemia, difficulty breathing and even clot formation in the lungs causing sudden death. It is important to remember that once the vital organs become irreversibly damaged treatment may no longer be an option.

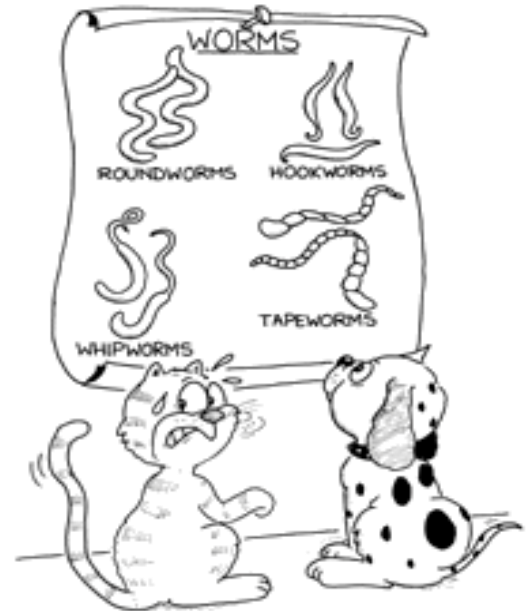


LIFE CYCLE OF THE HEARTWORM

## Prevention

Prevention is so easy and so very important. A tablet given once a month will keep your pet free of heartworms and their life threatening consequences. Trifexis, Heartgard, and Proheart are the three products we carry for heartworm prevention.

- A. Trifexis is a once a month flavor tab that prevents heartworm disease. Trifexis kills fleas and is indicated for the prevention and treatment of flea infestations. It also controls adult hookworm, adult roundworms, and adult whipworm infections in dogs and puppies 8 weeks or older.
- B. Heartgard is once a month flavor tab to prevent heartworm disease, control adult hookworm infection and remove and control roundworms in dogs and puppies.
- C. Proheart is 6 month injectable that is used in dogs six months of age and older to prevent heartworm disease continuously for six months and to treat common hookworm infections.



**Remember** that our area has lots of mosquitoes, which makes heartworms very common. Eighty percent (80%) of dogs that are not on heartworm prevention contract heartworms.

### **Treatment**

What do you do if your dog contracts heartworms? Most dogs can be treated successfully for heartworms. The most important factor is **early detection**. That is why all dogs should be tested for heartworms annually. Early detection coupled with a carefully planned treatment schedule based on your dogs' condition results in most dogs recovering from an infection of heartworms.

# FLEA PREVENTION

As a new owner of a puppy, it's important to know how to protect your pet and home from parasites and their harmful effects.

## Fleas pose a serious threat to puppies

Fleas are irritating parasites that bite and feed on puppy's blood. This can lead to serious problems such as skin infection and flea allergy dermatitis. Heavy flea infestations on puppies can cause anemia and sometimes even death.

Dogs and cats share the same fleas. It is important that all pets in your home are on a flea preventive. Treating your pet for fleas has never been easier. With the many choices we have today, we can provide you with the safest and most effective flea preventive for your pet's needs. Trifexis, Comfortis, and Frontline are the products we offer for the prevention of fleas.



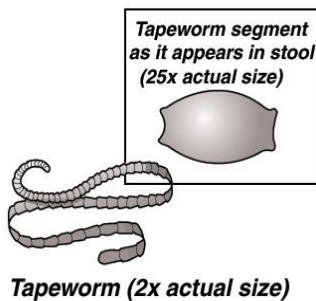
## Life cycle of the flea



A single female flea may produce up to 2,000 eggs over her lifetime. Eggs hatch and can develop into adults within only three weeks. Adult female fleas feed by ingesting blood from the pet and subsequently lay eggs, which drop off the pet's coat. Within days, larvae hatch from the eggs and live undetected in the pet's surroundings, such as carpet and bedding. The eggs and flea larva can last for months in the environment. Flea larvae spin a cocoon, and, when appropriately stimulated, a young adult flea emerges and jumps onto the pet to continue the life cycle.

## Apart from irritation, are fleas particularly harmful?

Fleas can cause anemia in heavy infestations, especially in young or debilitated dogs. A single female flea can take up to 15 times her body weight in blood over the several weeks of her adult life. In addition, biting fleas can cause medical problems such as flea allergy, anemia, secondary skin infection, and tapeworm infection. One of the most common tapeworms of the dog and cat is *Dipylidium caninum*. When fleas bite, the pet chews and ingests the flea which is infected with the tapeworm. Tapeworm segments look like flattened grains of rice on the pet's feces. Stopping fleas from biting and eliminating fleas on the pet can help prevent tapeworm infection.



## How do I prevent fleas on my dog?

There are several different preventative products for flea control which include Trifexis, Comfortis, Nexgard, and Activyl.